

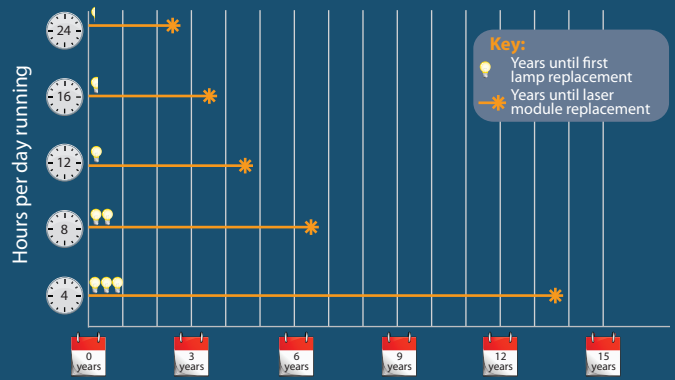
HIGHLite LASER II

13,000 Lumens, 20,000 Hours

DIGITAL PROJECTION

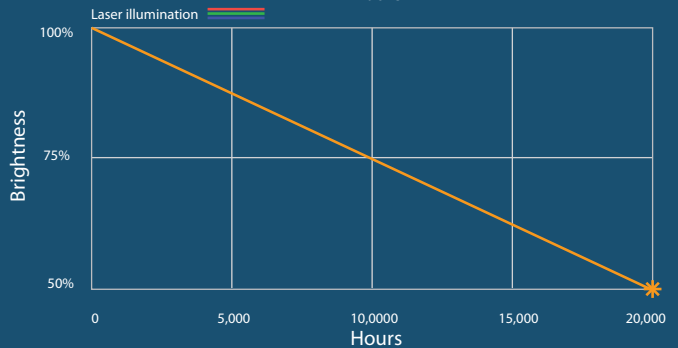
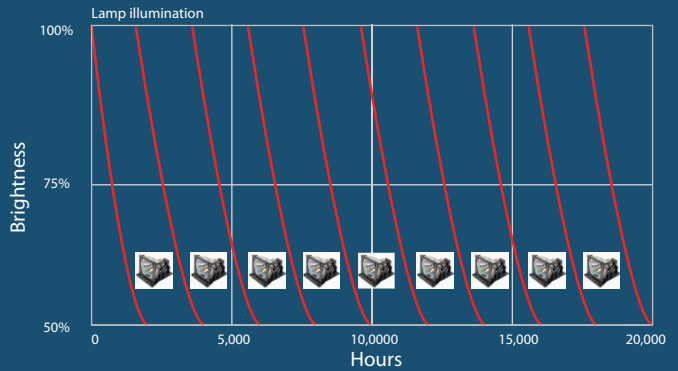


20,000 Hours Illumination



*This assumes a 7 day/week operation

Long, Stable Illumination



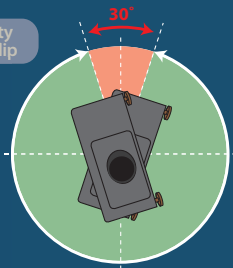
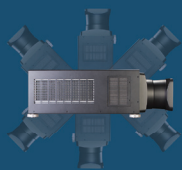
Typical Lamp requirement for 20,000 hours illumination (dual lamp competitor projector)



Laser module requirement for 20,000 hours illumination



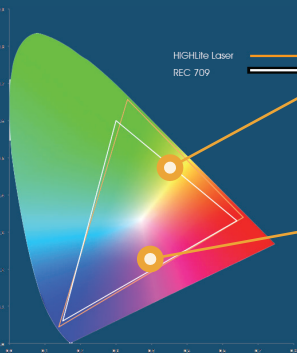
Remarkable Tilt Flexibility 180° x 180° with image flip



Workable angle
 Nearly all angles, including portrait mode

The only Non-workable angle
 Portrait mode with input side facing up

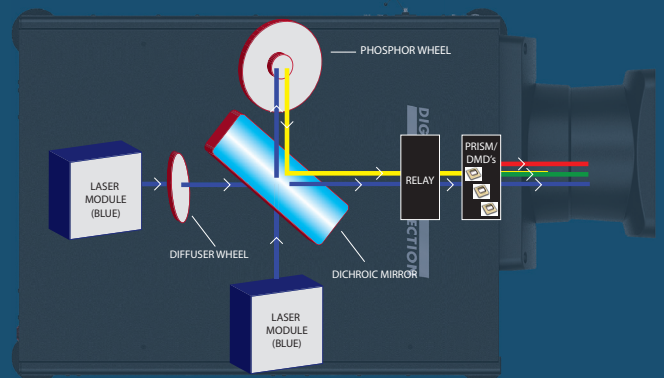
Stunning Color Gamut



Matches or exceeds traditional lamp based projectors

Meets REC 709 standard

Laser Light Engine



Set and Forget



Key Facts